

SALA FESTIVAL



SALA

EDUCATION RESOURCE FEATURING ARTIST KIRSTEN COELHO

SALAFESTIVAL.COM



WHAT IS SALA FESTIVAL?

Established in 1998, the South Australian Living Artists (SALA) Festival is the largest open access visual arts festival in Australia. For the entire month of August, audiences are able to discover, explore and engage with the work of South Australian artists in a diverse range of spaces across the state. From the city to the regions, art galleries and unconventional spaces display the work of local artists. Cafes, restaurants, wineries, schools, libraries, retail spaces, churches, and small businesses become exhibition spaces as part of SALA Festival.

Last year more than 8,000 artists of all ages and backgrounds participated in more than 690 exhibitions and events across South Australia. Participants ranged from professional practitioners to emerging artists and included participants of all ages and walks of life, from kindergartens to aged care facilities.

"I heard a quote the other day that "the Arts is the oxygen that breathes life into other areas of society" and I couldn't agree more as the SALA festival breathes creative life into our State throughout the month of August. It is a privilege to be a part of this energy." - 2018 Teacher, St John's Grammar School

HOW TO USE THIS RESOURCE

This resource is designed to support teachers and educators in exploring the Australian school curriculum through the SALA Festival.

The first section of this resource is about the work of 2020 SALA feature artist, Kirsten Coelho. You'll find a brief background of her work, a glossary of art terms and some suggested ways that students can be asked to respond to her work.

The second section of this resource outlines the various ways to maximise students' exposure to the work of South Australian artists through the SALA Festival. This could involve an excursion to an exhibition, or to a workshop with an artist at the SALA Parlour. You'll find a list of suggestions for on-the-go responses to art, which can be useful when coming across exhibitions in unexpected places. Students could be challenged to an 'art scavenger hunt' or planned tour of exhibitions in a certain area.

Towards the end of this booklet you'll find information on one of the best ways to take advantage of this celebration of the visual arts, which is to put on an exhibition of student artwork and register it as part of the Festival.



AUSTRALIAN CURRICULUM

The varied learning opportunities available throughout the SALA Festival align with multiple Australian Curriculum learning areas, including literacy and the general support capabilities of critical & creative thinking and personal & social capability.

Both the South Australian *teaching for effective learning* and *design thinking* models were taken into consideration when constructing the tasks in this booklet.

GLOSSARY

- **Abstract** - Non-representational works of art that do not depict scenes or objects in the world or have discernible subject matter.
- **Abstraction** - the freedom from representational qualities. The omission/distortion/exaggeration of an object's qualities to communicate a feeling - rather than pursue representational accuracy.
- **Artist in residence** - a position (usually appointed as part of a residency program) that offers an artist the opportunity to observe a particular place or environment (through frequent visits or by residing there) and respond to it through their artwork.
- **Art practice** - (noun) catch-all term for the way that an artist goes about their work, their influences, method, ideas and tools.
- **Brief** - a set of limitations to work within
- **Cast** - in pottery, to cast (verb) is to make a shape using a mold.
- **Ceramicist** - a person who makes ceramics
- **Ceramics** - pots and other items made from clay hardened by extremely high temperatures.
- **Clay** - a stiff, sticky fine-grained earth that can be moulded when wet, and is dried and baked to make bricks, pottery and ceramics.
- **Composition** - the arrangement of elements in an artwork
- **Curator** - a person who manages an exhibition, with tasks including: selecting artists and artworks, conceiving the exhibition's rationale, writing accompanying essays and floor sheets, being the conduit between artists and venue, and designing and installing the exhibition.
- **Enamelware** - enameled kitchenware, made with a base metal that is covered with porcelain enamel.
- **Figurative** - representing a figure
- **Form** - the shape of an object
- **Formal** - in this context, the Formal Elements Line, shape, form, tone, texture, pattern, colour and composition.
- **Glaze** - a coating of a glass-like substance fused to a ceramic object through firing, which can serve to colour, decorate or waterproof.
- **in the round** - freestanding, multidimensional, 'in real life', as like a theatre-in-the-round
- **Kiln** - a furnace for firing pottery.
- **Materials** - Physical resources used to create artworks or objects (eg. watercolour paint, charcoal, wood, clay, wax, glass, found objects)
- **Materiality** - the qualities or character of a material
- **Medium/Media** - the categorisation of art based on the materials used to make it (eg. painting, sculpture)
- **Negative space** - The space in and around the subject matter
- **Picture plane** - the illusory space the artist creates on a two dimensional surface
- **Porcelain** - a special type of white clay when fired to high temperatures becomes translucent and hard. Can be used to make cups, plates and decorative works.
- **Potter** - a potter, or pottery maker, generally, is an artist who creates pots, dishes, mugs, vases, and other types of functional pieces that are meant to be put to everyday use.
- **Slip** - clay mixed with water to a certain consistency used for joining, casting and decoration.
- **Subject matter** - the focus of the artwork
- **Throw** - to create/form an object on a spinning pottery wheel.
- **Thrown** - an adjective to describe an object that was formed on a potter's wheel.
- **Tone** - the lightness or darkness of a colour
- **Texture** - the surface quality or 'feel' of an artwork
- **Vessel** - a container for holding something (usually liquid)



SALA FEATURE ARTIST: KIRSTEN COELHO

Every year, in conjunction with SALA Festival, a publication is produced about a prominent South Australian artist. This year the artist is Kirsten Coelho; her work is featured on the program and posters for this year's SALA Festival.

Kirsten Coelho is a ceramicist whose carefully chosen glazes fuse the formal and abstract. Coelho studied at the South Australian School of Art before moving to London. In 1998 she returned to Adelaide as a studio tenant at the JamFactory, and later completed her Master of Visual Art at the South Australian School of Art.

Coelho creates thrown porcelain vessels, whose shapes and glazes hint at the enamel wares of the 19th and early 20th century whose surfaces show wear.

Many of Coelho's ceramics are glazed in subtle shades of white or pale blue with rims or details applied with Iron Oxide, giving the appearance of

rust. The materials used in the creation of her works juxtapose each other: porcelain is often associated with perfection, delicacy, preciousness and functionality while rust is considered imperfect, undesirable and in some cases hinders functionality.

"Coelho's restrained 'rust marks' remove her work from the realm of untainted classical perfection and place it firmly within the context of real world change and mortal decay" [1]

- Stephen Bowers

Coelho often displays her works in carefully curated groups. These arrangements convey 'the domestic history of objects' [2]. The forms of these objects, bowls, bottles and lidded vessels are familiar - we use them daily. But the sparseness of the arrangement and colour of the glazes can be seen as alluding to the austerity of the Australian landscape [3].



AUTHENTIC LEARNING

Due to the focus on local artists, SALA Festival is an excellent time to engage your class in authentic learning. Visiting exhibitions, talking to curators or the artists themselves allows students to understand visual art outside of the classroom.

Visiting the SALA Parlour for workshops with local artists or contracting a local artist to visit your school and run activities with your class enables students to learn and demonstrate skills in a real world context.

Holding a SALA exhibition of student artwork gives children an understanding that their art has value beyond the confines of their school.

EARLY YEARS

Responding

Using an image of Coelho's work as a starting point, look at 3-5 different glasses, jars, bottles or bowls. Look at different elements of design like shape, colour, transparency. What makes a bowl fancy or simple? How can we tell if it is old or new? Which do your students prefer and what occasion would they use them for? Discuss the differences between the vessels.

Making - Pinch Pots

Using clay (there are many different types including air dry clay) give each student a tennis ball-sized amount and ask them to roll it into a ball. Then students create an opening by pressing their thumb into the centre. They can now start pinching the walls of their pot in a circular motion (spiraling outwards) to create the shape of their pot. You may like to prompt them to think about the shape of their pot or the marks their fingers are making.



FORMAL ELEMENTS & ABSTRACTION

Abstraction might seem an odd thing to link to Coelho's work, but in this case, abstraction refers to the simplification of her subject material to highlight other elements of art in her work. These include line, colour, texture, space, shape, value and form. It might seem strange to have a discussion about colour considering there is little colour in the work, but consider discussing with your students why the artist may have chosen not to include colour.

Similarly, as Coelho's works are so purposefully arranged, talk to your class about different ways of composing space. This might be through the golden mean, rule of thirds, pyramidal or triangular composition. Consider how composition on a page and composition 'in the round' might differ from one another.

PRIMARY

Responding

Look at Coelho's works with your class and ask them to consider how she arranges each piece. Encourage students to discuss composition using visual arts language such as negative space, form, line and texture.

Making

Ask students to create a still life arrangement and have them draw it. Students could draw the arrangement from one angle for an extended period of time or they could create multiple arrangements and move between them, each time they move beginning a new drawing. Ask them to consider whether compositions work well from different angles.

Bonus: The objects arranged in the still lifes could also be produced by the students using clay or cardboard.



ARTIST IN RESIDENCE

In 2015, Kirsten Coelho participated in the Nancy Fairfax Artist in Residence studio held in conjunction with the Margaret Olley Centre. A residency is an opportunity for an artist to work on their practice outside of their usual studio setting. This residency allowed artists to explore a re-creation of Olley's home studio.

Coelho explored the collection of objects in Olley's studio and made work responding to these arrangements. In her ceramic groupings she has included a bright blue vessel and named the arrangements after flowers as a reference to Olley's love of flowers.

'Coelho celebrated a fellow artist's shared interest in everyday forms, demonstrating how their spatial and emotional resonance can enrich our lives, if we only look.' [4]

- Colin Martin

SECONDARY

Responding

Compare and contrast the work of Margret Olley and Kirsten Coelho. What are the main concerns of each artists' practice? Even though they work in different media are there any common themes?

Making

Ask students to think about an object that is special to them. Why is this object important to them? Is this reason evident in the materiality of the object? Ask students to reflect on this and respond to it in a medium they feel is appropriate. Ask students to consider why they have chosen their medium and what they are going to depict. Encourage students to depict something other than the object they are responding to.

SOURCES

Here are a list of sources about SALA feature artist Kirsten Coelho. These are great starting points for teachers and students to explore Coelho's practice and to gain some background understanding before engaging with the activities in this resource.

Publications

Walker, W, 2020, 'Kirsten Coelho', 1 edn, Wakefield Press, Adelaide

Websites

Coelho, K 2019, 'Kirsten Coelho', <http://kirstencoelho.com/>, accessed 18/12/2019

[2] Adrian Sasson, 'Kirsten Coelho', <https://bit.ly/35yfxOe>, accessed 18/12/2019

Catalogue Essays

[3] Walker, W 2015, 'Kirsten Coelho: In the Falling Light',

Journals

[4] Martin, C 2016, 'Portrait of the Artist as Collector', *Ceramic Review*, Issue 281, pg 19, <https://bit.ly/36RQhTr>, accessed 18/12/2019

[1] Bowers, S 2008, 'Iron in the Soul', *Ceramic Review*, Issue 231, pg 30-35, <https://bit.ly/2rNOyja>, accessed 18/12/2019

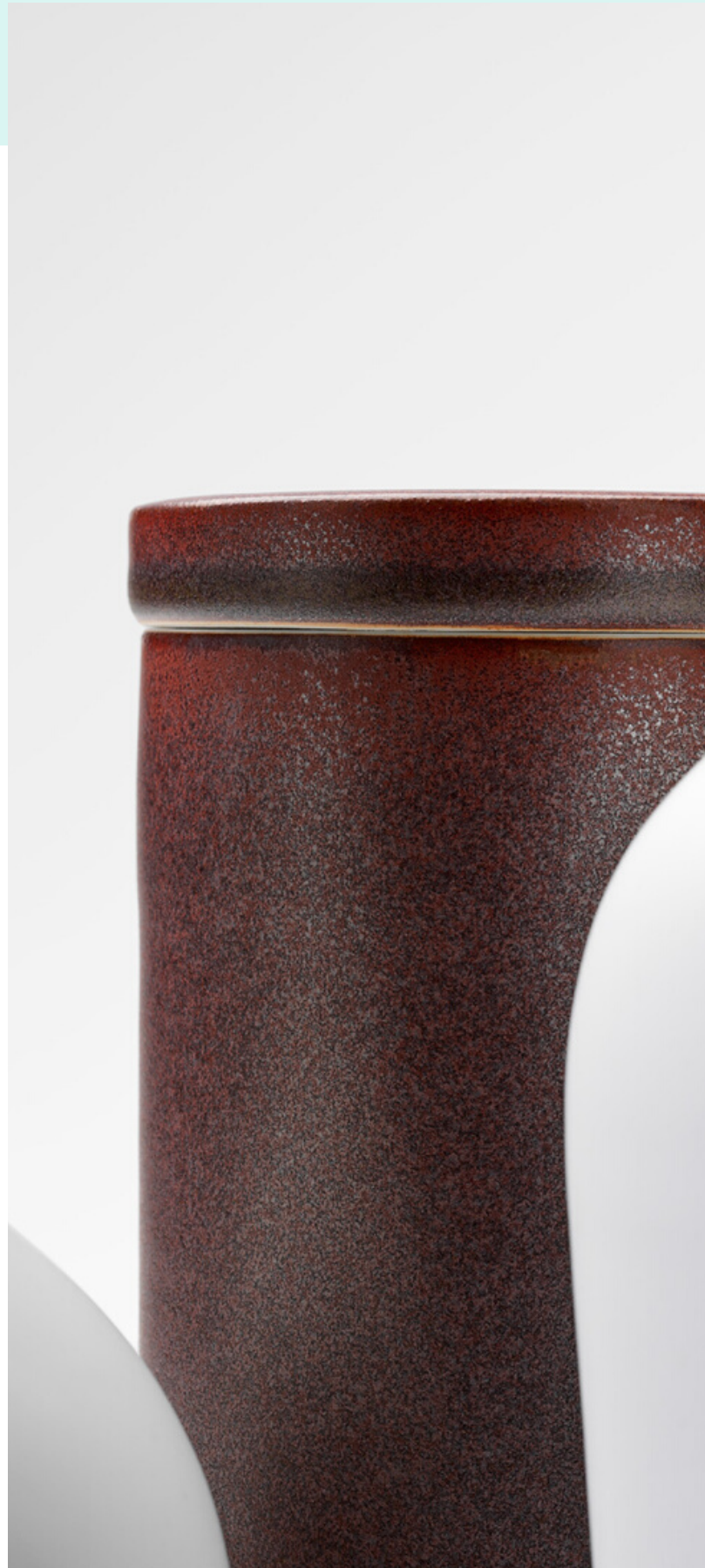
Martin, C 2018, 'Profile: Kirsten Coelho', *Artichoke*, Issue 64, pg 61-65, <https://bit.ly/35yJqOr>, accessed 18/12/2019

Videos

Art Gallery of South Australia, 2018, *Tim Edwards & Kirsten Coelho*, <https://bit.ly/2r746y2>, accessed 18/12/2019

Other

AGSA Curiosity Cards
Anywhere Art Guide: 75 cards for Appreciating Art Wherever You Are, Magda Lipka Falck



GETTING OUT AND ABOUT

The SALA Festival provides a great opportunity for students to see multiple exhibitions by South Australian artists in one outing.

JAMFACTORY

In 1998, Kirsten Coelho returned to Adelaide as a studio tenant at the JamFactory.

The JamFactory is a centre for contemporary craft and design, supporting innovation and excellence within the industry through its studios, galleries and shops. The JamFactory offers tours of their two sites - in the Adelaide CBD and the Barossa - to small groups. Contact the JamFactory for more details.

SAMSTAG MUSEUM

The Samstag Museum of Art is one of the University of South Australia's leading creative centres, presenting an exhibitions program of contemporary visual art, and art of the past that has relevance for us today. Kirsten Coelho's work will feature in an exhibition at the Samstag Museum in August 2020.

ART GALLERY OF SOUTH AUSTRALIA

The Art Gallery of South Australia (AGSA) exhibits work by South Australian artists throughout the year. During SALA Festival you can head to CareersFEST (7 August) to hear how arts professionals developed their careers or come to the #tROOperprojectau Art Auction (9 August). This Project aims to raise funds for Australian bush fire charities by auctioning off kangaroo sculptures painted by South Australian artists and St. John's Grammar Students. Alternatively, book in your class for a guided tour of AGSA through their website.

DIY TOUR

Using the SALA program or the SALA App Map, you could plan an excursion to a selection of exhibitions in one area.

SALA PARLOUR

The SALA Parlour is a drop-in art space that appears on the SA Museum lawns during August. School groups can come here to participate in workshops with local artists - contact the SALA Office to organise a time. Places are limited.

MOD.

This futuristic museum of discovery hosts a new interactive exhibition every six months, designed for 15-25 year olds and intersecting art and science. Younger audiences will benefit from guidance to fully engage with the exhibition. MOD. is close to the Adelaide train station.

Download the SALA Festival App

The SALA Festival App is available for free from the App Store & Google Play.

Use the SALA Festival App Map to see which exhibitions are near you, read exhibition descriptions and 'favourite' exhibitions to visit later.

ON-THE-GO LEARNING

Here are some tasks to do on-the-go when viewing a SALA exhibition with your students. They require little or no materials and aim to encourage students to think in different ways.

Early years

- In pairs, tell or create a story about the art work you are viewing
- Draw what you see
- Pick a colour, draw all the shapes in the artwork that are that colour.
- Look at an artwork from far away and describe what you see. Repeat up close.

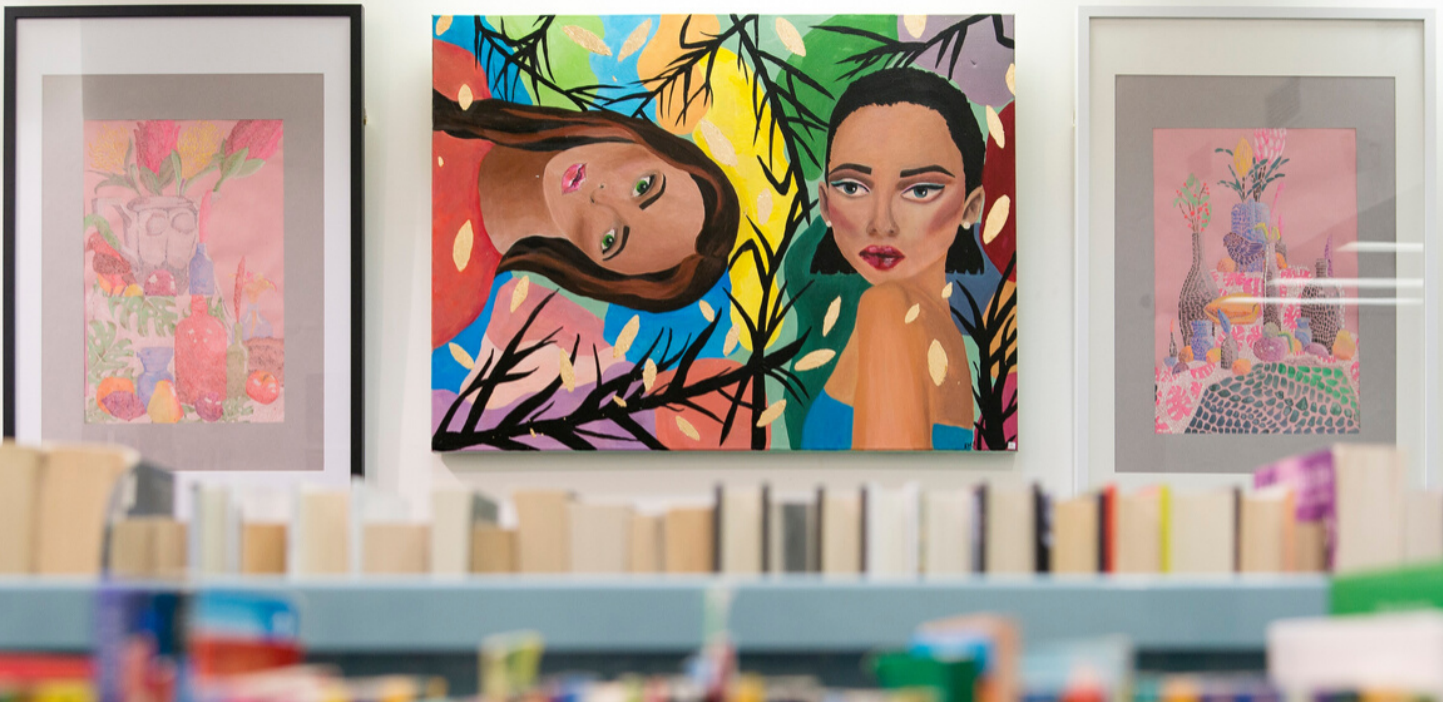
Primary

- Look at the art work and write down what you think it is about. Now look at the title of the artwork, does this change your understanding of the work? How?
- Is this a happy or sad artwork? What in the artwork makes you feel happy or sad?
- Draw what this painting might look like as a sculpture. What elements are important to leave in and what can be taken out?
- Find an artwork that relates to you somehow and explore how and why it does.

Secondary

- Spend 5 minutes looking at one artwork. What do you notice now that you didn't before?
- How many artists are in this exhibition? Compare and contrast two artists.
- Make a playlist for an exhibition. What music will you choose and why?





HOW TO EXHIBIT STUDENT ARTWORK WITH SALA FESTIVAL

As well as viewing and responding to art as part of SALA Festival, students are also invited to exhibit as part of the Festival. Schools can register an exhibition of student artwork for free, thanks to SALA's Education Partner, Credit Union SA.

Putting on a student exhibition can have many positive outcomes. Students working towards a public outcome may be more motivated in their artmaking, and will have a connection to the South Australian visual arts industry, as their exhibition will be registered alongside many established artists in the SALA program.

Student exhibitions can be as big or small as is suitable. There are no requirements on number of participants, number of artworks, or age. The only requirement to participate in the Festival is that the exhibition has to be open to the public at least once during August.

For more information on the benefits and process of registering a student exhibition, please see [SALA Festival's Education Information Pack](#).

For more information contact us via **office@salafestival.com** or 7077 0011

NOTES

This image shows a blank sheet of white paper with horizontal ruling lines. The lines are evenly spaced and run across the width of the page. There are no margins, text, or other markings on the paper.

[illegible]

SALA

FREE EXHIBITION REGISTRATION

FOR ALL SCHOOLS THANKS TO SALA'S
EDUCATION PARTNER, CREDIT UNION SA



[illegible]

SALA

FREE EXHIBITION REGISTRATION

FOR ALL SCHOOLS THANKS TO SALA'S
EDUCATION PARTNER, CREDIT UNION SA





IMAGE LIST

- Kirsten Coelho, *Ithaca*, 2019, Porcelain Matt White Glaze, Banded Iron Oxide, Saturated Iron Glaze, photo Grant Hancock, image courtesy of the artist and Sullivan and Strumpf Sydney
- SALA Parlour, 2019, photo Sam Roberts
- Bowden Brompton Community School Student, 2019, photo Steph Fuller
- Kirsten Coelho, *Passage*, 2017/18, Porcelain Matt White Glaze, Banded Iron Oxide, photo Grant Hancock, image courtesy of the artist and Philip Bacon Galleries
- Kirsten Coelho, *Gardenia*, 2018, Porcelain Matt White Glaze, Banded Iron Oxide, photo Grant Hancock, image courtesy of the artist and Philip Bacon Galleries
- Kirsten Coelho, *Deliberance*, 2019, Porcelain Matt White Glaze, Banded Iron Oxide, Saturated Iron Glaze, photo Grant Hancock, image courtesy of the artist and Sullivan and Strumpf Sydney
- Kirsten Coelho, installation view, *Portrait*, Tweed Regional Gallery, 2016, Porcelain, Matt Glaze, Cobalt Glaze and wood, photo Justin Eland Bushturkey Studios NSW
- Kirsten Coelho, *Stay* (detail), 2019, Porcelain Matt White Glaze, Banded Iron Oxide, Saturated Iron Glaze, photo Grant Hancock, image courtesy of the artist and Sullivan and Strumpf Sydney
- Indian Bilingual Art Tours, 2019, photo Sam Roberts
- Adelaide High School - *Creative Collective* at Hutt St Library, 2019, photo Steph Fuller
- SALA School Award Ceremony, 2019, photo Sam Roberts

CONTACT SALA FESTIVAL

7077 0011

office@salafestival.com

salafestival.com

[#salafestival](https://twitter.com/salafestival)

SALA