



SAHMRI/ South Australian Living Artists Artist-in-Residence Program

Submitting a Proposal to the Residency Program at SAHMRI

In association with the South Australian Living Artists (SALA) Festival, South Australian Health & Medical Research Institute (SAHMRI) is inviting proposals for participation in an Artist-in-Residence program in 2018 from South Australian artists or groups of artists for up to six months.

Proposals must include an outcome of new works inspired by SAHMRI activities and is suitable for display at SAHMRI during the SALA Festival in August 2018.

Proposals need to include the following

1. An up-to-date CV for each participant
2. A selection of images of previous work with detailed information.
3. An outline of your intended residency project (media, concept, possible activities, potential outcomes)
4. The intended timeframe and;
5. An indication of your needs for residency space and display area

Successful participants will receive an office space to work in the building as well as access to observe and interact with SAHMRI staff and research laboratories.

SAHMRI will require the successful participants to sign a confidentiality agreement due to the sensitive nature of SAHMRI's activities.

Residencies are considered according to proposal strength, relationship to the SAHMRI activities or infrastructure and availability of space.

Artist Fee – selected individual artists or artist teams will be paid a total fee of \$2,000 (ex GST). \$1,000 will be paid upon signing the MOI to assist artists with materials and expenses with the final payment of \$1,000 being issued on completion of the project.

SAHMRI research themes;

- Aboriginal Health
- Cancer
- Healthy Mothers, Babies & Children
- Heart Health
- Infection & Immunity
- Mind & Brain
- Nutrition and Metabolism

For more information about SAHMRI go to <https://www.sahmri.com/>

Please submit proposals by 5pm on Monday 22 January 2018 via email preferably with a link to a dropbox to: office@salafestival.com or post to: Penny Griggs, General Manager SALA Festival GPO Box 544, Adelaide SA 5001

The successful applicant will be informed by Monday 5 February 2018.

SALA



About SAHMRI

North Terrace, Adelaide

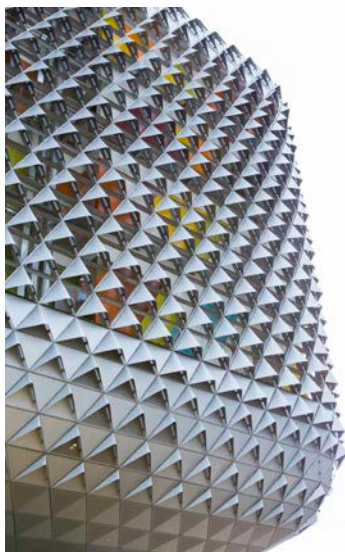
Vision

To transform research into health.

Our Mission

SAHMRI will

- Be a vibrant, globally-recognised institute that fosters discovery and harnesses dynamic collaborations to deliver health outcomes and community impact
- Fundamentally improve the quality of life for all people, through innovative, world-class and ground-breaking health and medical research
- Provide a clear focal point for health and medical research in the State.



Values

We value:

- Excellence
- Imagination
- Courage
- Integrity
- Teamwork

Our Culture

SAHMRI is:

- Bold and Driven
- Persistent and Focused
- Collaborative and Enabling
- Respectful, Inclusive and Compassionate
- Friendly, Fast, Flexible and Fun

SAHMRI significantly increases the nation's capacity for leading scientific research by:

- Gathering a team of more than 600 outstanding researchers, who work together in the search for better treatments and cures for some of the world's most challenging diseases
- Creating a world-class precinct of medical research and clinical application, with state of the art laboratories and equipment in a purpose-built, iconic, 25,000 square-metre facility, adjacent to the site of the new Royal Adelaide Hospital (new RAH)
- Actively fostering and nurturing a new generation of the top research minds, and undertaking extensive and interactive community engagement and education programs.

<https://www.sahmri.com/>



Past recipients of the SAHMRI/ South Australian Living Artists Artist-in-Residence Program include:

2017

Artist/ Sonali Patel – ceramic, sculpture, installation
Project/ Hosted by Heart Health theme. *A Heart has a Thousand Names* - metaphorical explorations of love, transience and transformation. Musings on matters of the heart reflect the interplay of nature's patterns mirrored within us.



2016



Artist/ Joy Levins - glass
Project/ Hosted by the Nutrition and Metabolism department. Explored imaging of the cell and create large scale 'floating' glass pieces (both sculptural and wall mounted pieces) so that the observer may imagine and realise the beauty in the minute.



Artist/ Niki Sperou – mixed medium, installation
Project/ Hosted by the department of Infection and Immunity. Survey the microbes that inhabit our bodies, their movements and variability. Through my residency I communicated contemporary narratives associated with microbial identification and tracking.

2015

Artist/ Angela Valamanesh – mixed medium, painting
Project/ Hosted by the Mind & Brain Department. Exploring the most recent medical imaging techniques. The initial outcome was a series of small paintings exhibited in the SAHMRI foyer.

2014



Artist/ Bridgette Minuzzo – multimedia
Project/ During her residency Bridgette took the opportunity to look and listen, to document and interpret: forms and patterns in the SAHMRI building.

Artist/ Sonya Unwin – painting
Project/ Examine the nexus of art and science with an outcome of portraits of key researchers working at SAHMRI.

